
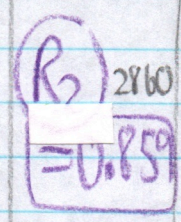


Fleischmann Mountain 5/26/13

200-28

with Alan Via, Ralph Ryndak, Jim Hopson, Jeff Couture

site	p	Δp	Δe	e calc	e map	time	R
(A) 2810 *	29.96	0.00	—	—	1500'	19:20	$\frac{2900' - 1500'}{2996' - 2843'} = \frac{1400'}{1.53''} = 0.915 \text{ (R1)}$
(B) "Jake's Junction"	29.64	0.32	293	1793		9:47	
(C) chestnut sapling	29.50	0.46	421	1921		9:58	
(D) obscure log road	29.48	0.48	439	1939			
(E) 2nd chestnut sapling	29.46	0.50	458	1958			
(F) high pt. on ^{lower} log road	29.42	0.54	494	1994			
(G) base ledge	29.38	0.58	531	2031			
(H) Chestnut top ledge	29.35	0.61	558	2058		10:24	
(I) middle log road	29.30	0.66	604	2104			
(J) upper log road	29.19	0.77	705	2205	Alan 2293'	10:36	
(K) blaze	29.10	0.86	787	2287		10:44	
(L) top of spur; oak	29.00	0.96	878	2378	2400	11:00	
(M) flat on spur	28.80	1.16	1061	2561			
(N) ^{New} Point W of 4/19/09	28.74	1.22	1116	2616		11:19	
(O) spurs join from SW	28.48	1.48	1354	2854		11:40	
(P) Bog	28.48	1.48	1354	2854	2860	11:50	
(Q) Summit	28.43	1.53/1.63	1400	2900	2900'	12:17 to 12:40	
(R) Interrupted fern	28.46	1.60 [↑]	1374	2874		12:45	
(P) Bog	28.50	1.56	1340	2840		1:35	
(S) OAKS	28.98	1.08	928	2428		2860	2:06
(T) E. white pine	29.10	0.96	825	2325		2:25	
(KK) blaze	29.16	0.90	773	2273		2:36	
(U) upper log road	29.24	0.82	704	2204		2:41	
(V) middle log road	29.39	0.67	576	2076		2:49	
(W) Chestnut	29.41	0.65	558	2058		2:52	
(F) high pt. on lower log rd.	29.50	0.56	481	1981		3:00	
(BB) Jake's Junction	29.66	0.40	344	1844		3:09	
(A) 2810 *	30.06	0.00	—	—	1500'	3:40	$\frac{2900' - 1500'}{3006' - 2843'} = \frac{1400'}{1.63''} = 0.859 \text{ (R5)}$

* time spent at Cathyt Joe's both ways.

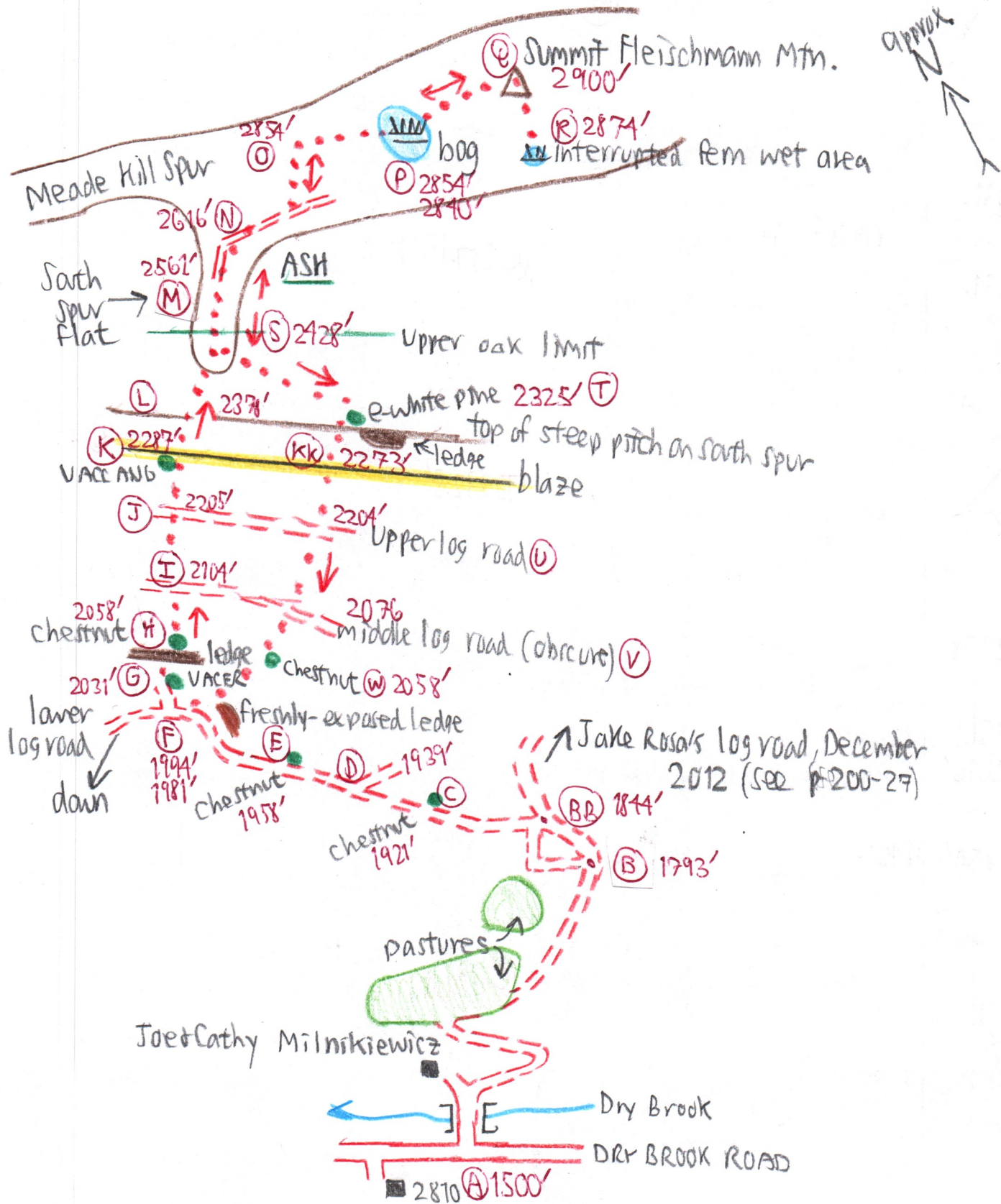
● Chestnuts

200-29

(C) + (E) 2 ft tall seedling at (C) 1921'. At (E) 1958', 2 ft tall sprout attached to dead tree with wood collected; is it Chestnut?

(H) 2058' Dead tree 7.5" dbh with live sprouts. About 25' tall } both noticed

(W) 2058'. Live tree 3.5" dbh with bark just beginning to split } by Ralph.



(B) (BB) 1793', 1844' See p 200-27 for Jake Rosa's log road, December 2012, mostly for ASH.

(E) (E) (M) See top of p 200-29 - Chestnuts

(D) 1939' Obscure log road heads up to E, but junction with lower log road (BB) to (F) has been cut off. The lower log road is at a slightly lower elev. and has been freshly regraded by Jake (?) Rosa in Dec-2012, especially between—

(E) + (F) where bedrock has been freshly-exposed. (1958 to 1994).

(G) 2031. Ledge base. oak & VACC. Chestnut leaf found here on 4/19/09 (see p. 200-18)

(I) 2104' - The middle log road is indistinct here, covered with DP & sloping down to the east.

(K) 2282' Vacc at blaze, another remnant of formerly-burned open oak woods?

(L) 2378' oak still common at top of steep pitch, but becoming few at Deer stand.

(M) 2561' with open DP glades.

(N) 2616' - Just below point (N) 2674' of 4/19/09 (see p. 200-18).

(P) 2854', 2840' - Hemlock bog. Completely missed on 4/19/09.

HEMS of varying ages, incl. repro. Largest 37" at W edge & 32" on E edge. 3 HEMS down at N end of bog with 12" deep 'cakes.

Approx. one acre probably untouched and still in 1° plus a high-elev. hemlock refugium.

Stumps surround (200-30) the bog, as well as on summit and whole crest.

Were stumps obs in 1987 (see p 200-1)? Yes, from estimated early 1980s cut.

Bog flora:

RM	OX	CB	SINT	BAZZ
VB	COPTIS			SPHAGNUM
VACC ANG	CHELONE			

Probe depths numerous. Most 12", maybe max-14". Not worth sampling.

(R) 2874' - Interrupted fern swale is the open area noted on 4/19/09 (see p-200-21 map) Wet but nil peat accum.

(S) 2428' oaks begin on descent, although ASH climb prob as high as (N).

(T) 2328' E white pine. dbh measured to 25". Was it grown in 4 years? 22" dbh (see p-200-19).

2009 Description of the pine ((J), p. 200-19) with persistent lower branches, VACC ANG, Chestnut, and oak suggest an open stand here at one time. But how long ago?

(@) 2900: Plastic bag hanging on a limb marks the summit. Who left it there since 2009?